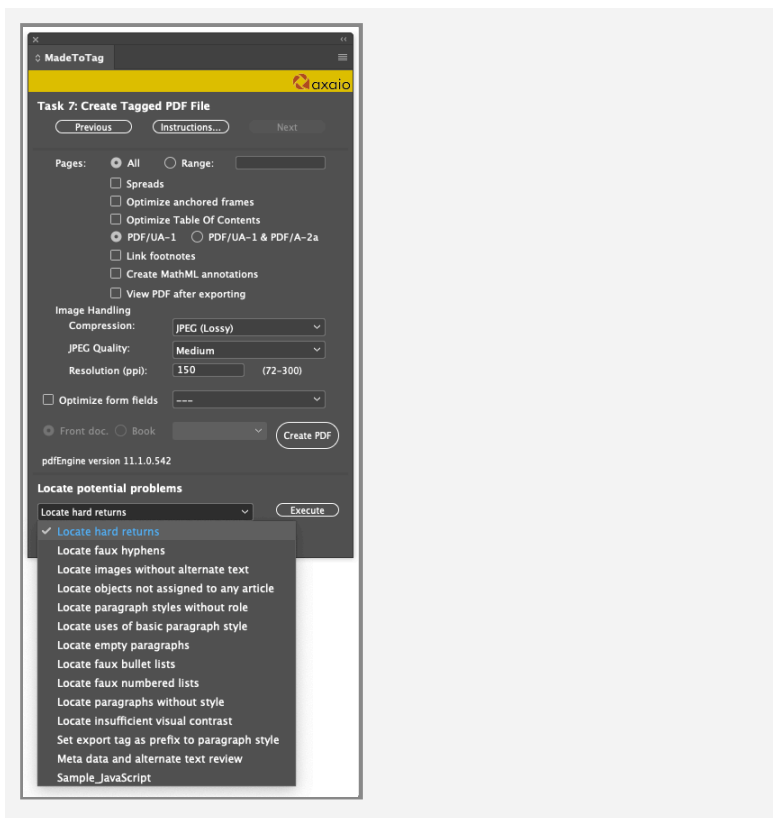


# “Troubleshooting” for accessible PDFs

At the bottom of the MadeToTag window, the user can access a drop-down list of options for locating and resolving problems.



MadeToTag can locate problems which prevent straightforward creation of accessible PDF files.

Select a function and click *Execute* to open the corresponding dialog.

[If MadeToTag finds no problems of the selected type, it will report back with a window saying *No problems found.*]

## Locate hard returns



When this function is called, the MadeToTag Problem Locator window will open at *Looking for hard returns*.

1. The window shows the *Number of potential hard returns* as well as the number of *Fixed* and *Unfixed* items.
2. The interface at the bottom allows you to *navigate*, *Fix* items, *Undo* and *Redo* actions and *close* the window.

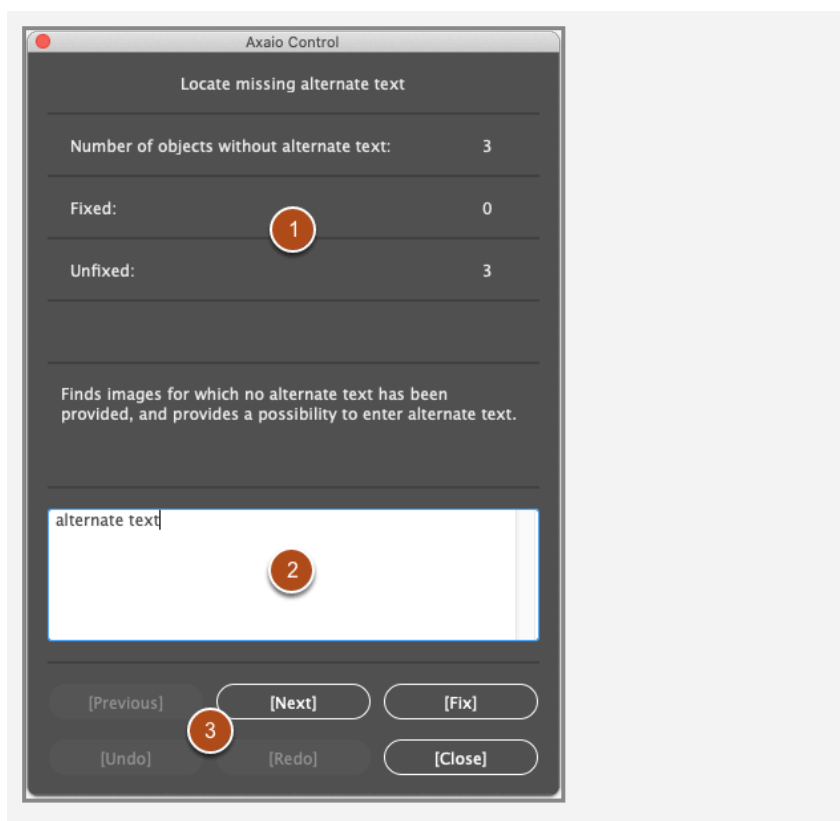
## Locate faux hyphens



When this function is called, the MadeToTag Problem Locator window will open at *Find faux-hyphens*.

1. The window shows the *Number of potential faux hyphens* as well as the number of *Fixed* and *Unfixed* items.
2. The interface at the bottom allows you to *navigate*, *Fix* items, *Undo* and *Redo* actions and *close* the window.

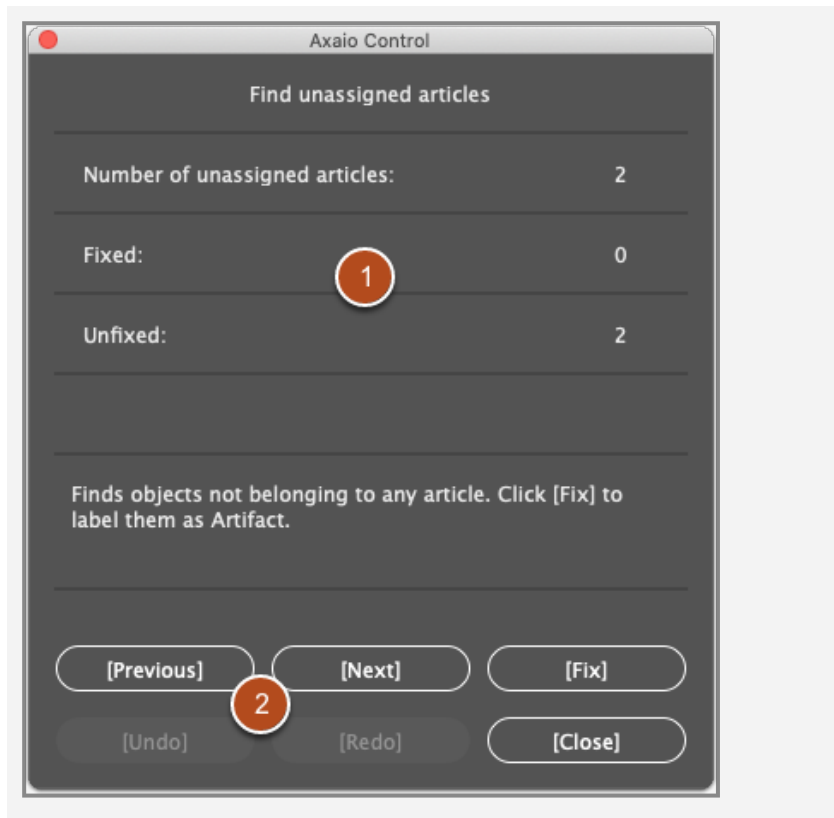
## Locate missing alternate text



When this function is called, the MadeToTag Problem Locator window will open at *Locate missing alternate text*.

1. The window shows the *Number of objects without alternate text* as well as the number of *Fixed* and *Unfixed* items.
2. The *text box* lets you enter alternate text for selected images.
3. The interface at the bottom allows you to *navigate*, *Fix* items, *Undo* and *Redo* actions and *close* the window.

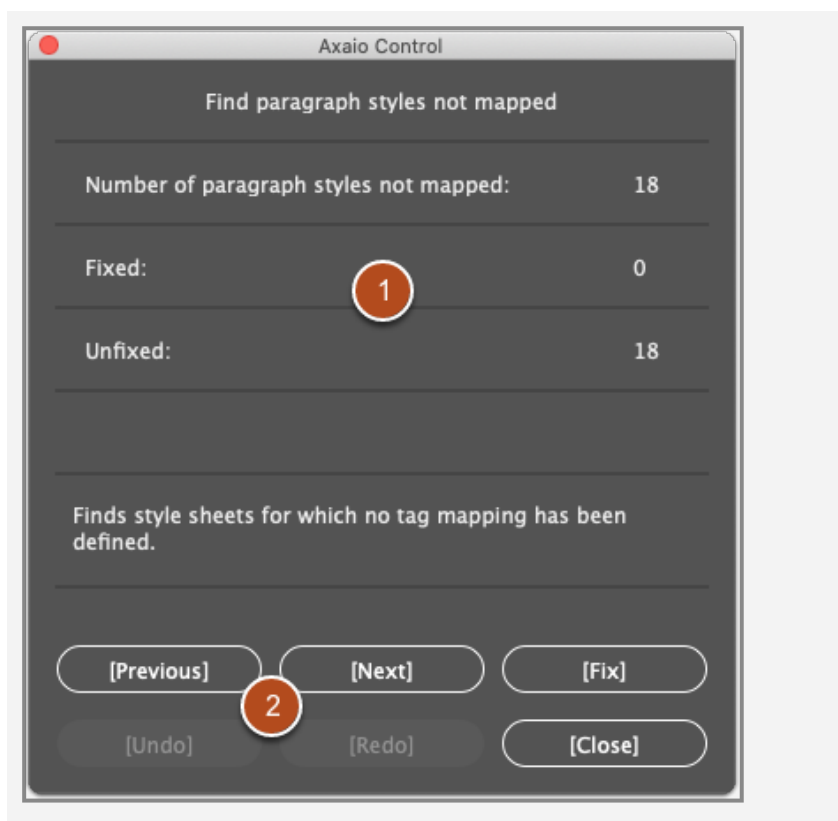
## Locate objects not assigned to any article



When this function is called, the MadeToTag Problem Locator window will open at *Find unassigned articles*.

1. The window shows the *Number of unassigned articles* as well as the number of *Fixed* and *Unfixed* items.
2. The interface at the bottom allows you to *navigate*, *Fix* items, *Undo* and *Redo* actions and *close* the window.

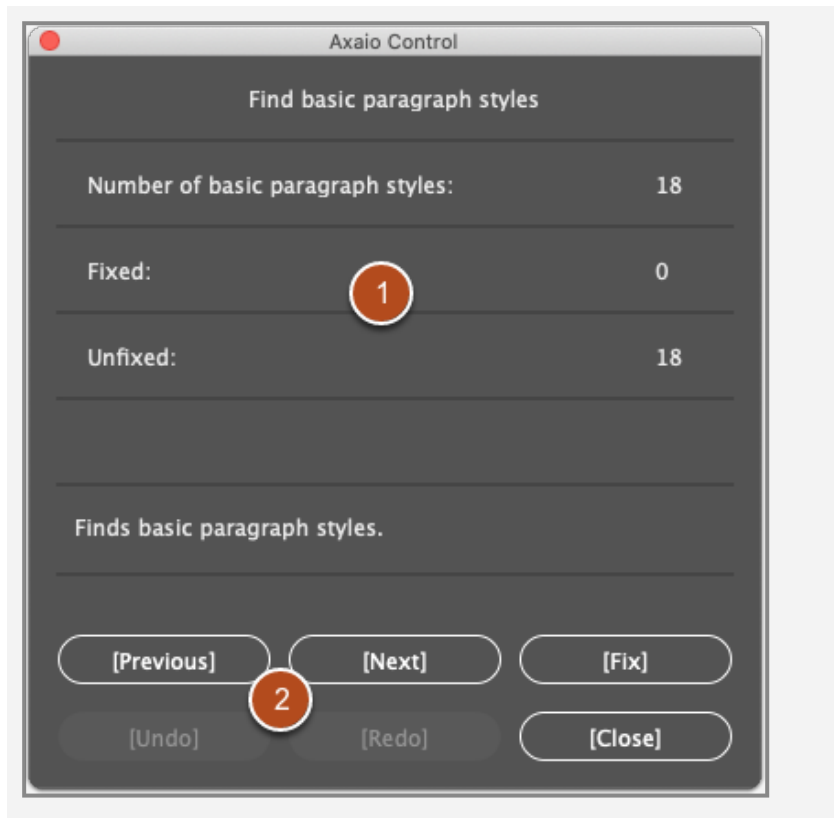
## Locate paragraph styles without role



When this function is called, the MadeToTag Problem Locator window will open at *Find paragraph styles not mapped* (paragraph style with no export tag assigned).

1. The window shows the *Number of paragraph styles not mapped* as well as the number of *Fixed* and *Unfixed* items.
2. The interface at the bottom allows you to *navigate*, *Fix* items, *Undo* and *Redo* actions and *close* the window.

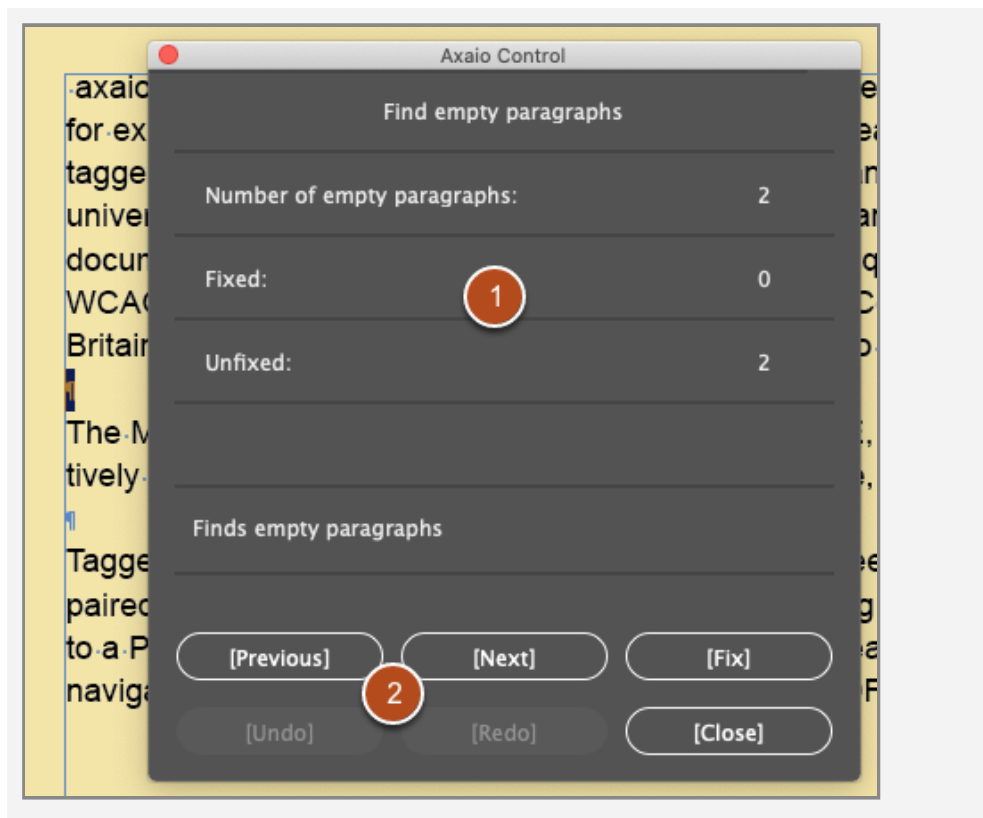
## Locate uses of basic paragraph style



When this function is called, the MadeToTag Problem Locator window will open at *Find basic paragraph styles*.

1. The window shows the *Number of basic paragraph styles* as well as the number of *Fixed* and *Unfixed* items.
2. The interface at the bottom allows you to *navigate*, *Fix* items, *Undo* and *Redo* actions and *close* the window.

## Locate empty paragraphs

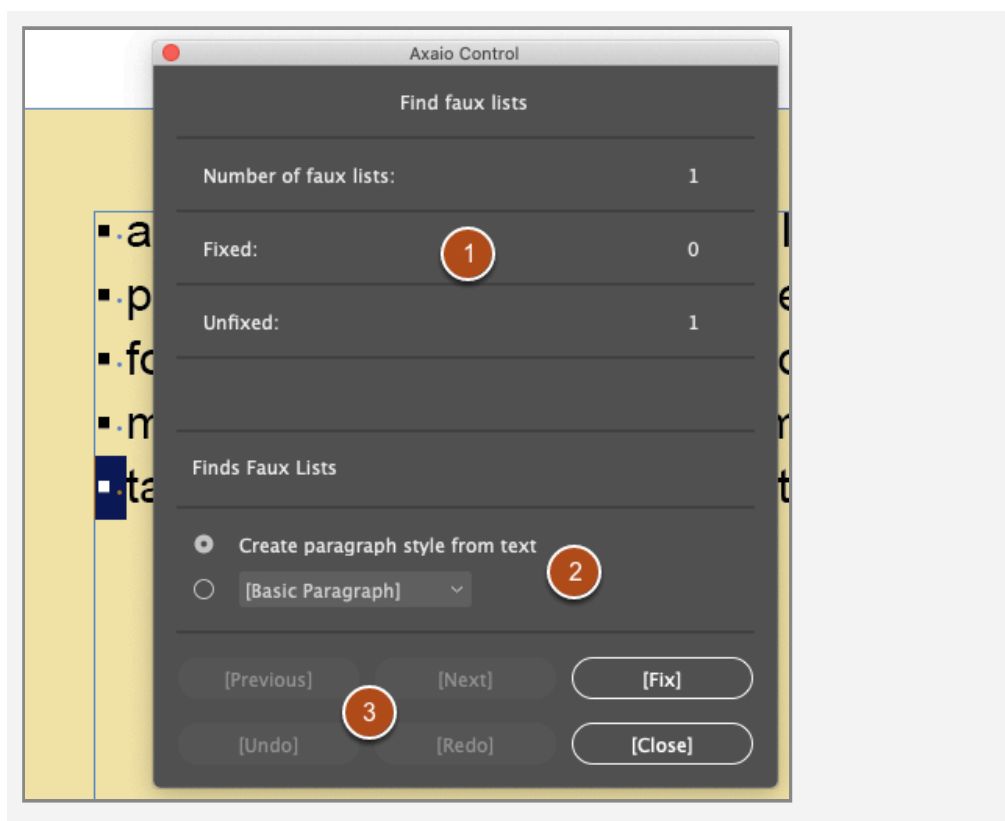


When this function is called, the MadeToTag Problem Locator window will open at *Find empty paragraphs*.

1. The window shows the *Number of empty paragraphs* as well as the number of *Fixed* and *Unfixed* items.
2. The interface at the bottom allows you to *navigate*, *Fix* items, *Undo* and *Redo* actions and *close* the window.



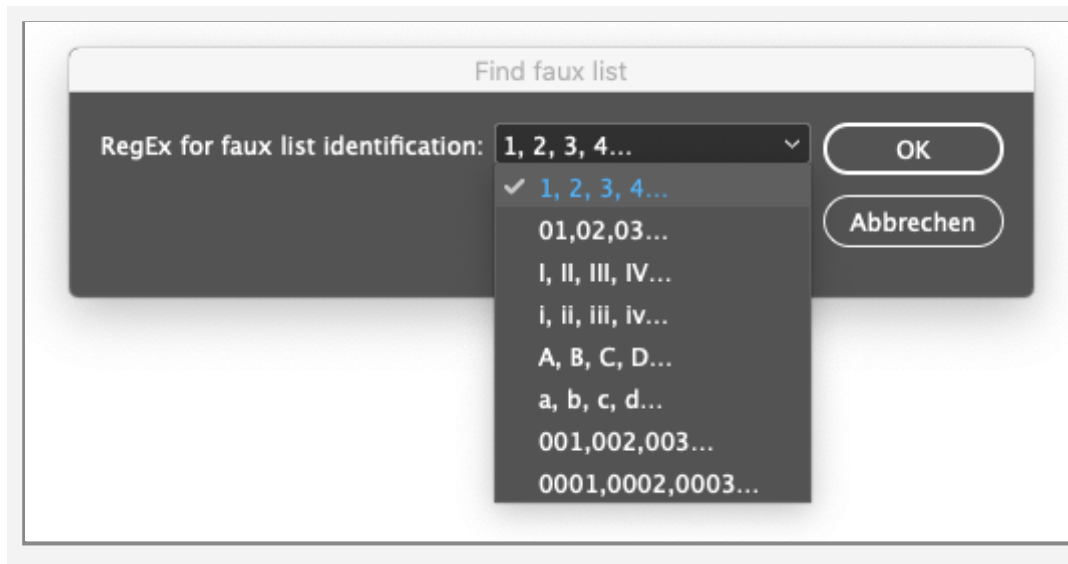
## Locate faux lists



When this function is called, the MadeToTag Problem Locator window will open at *Find faux lists*.

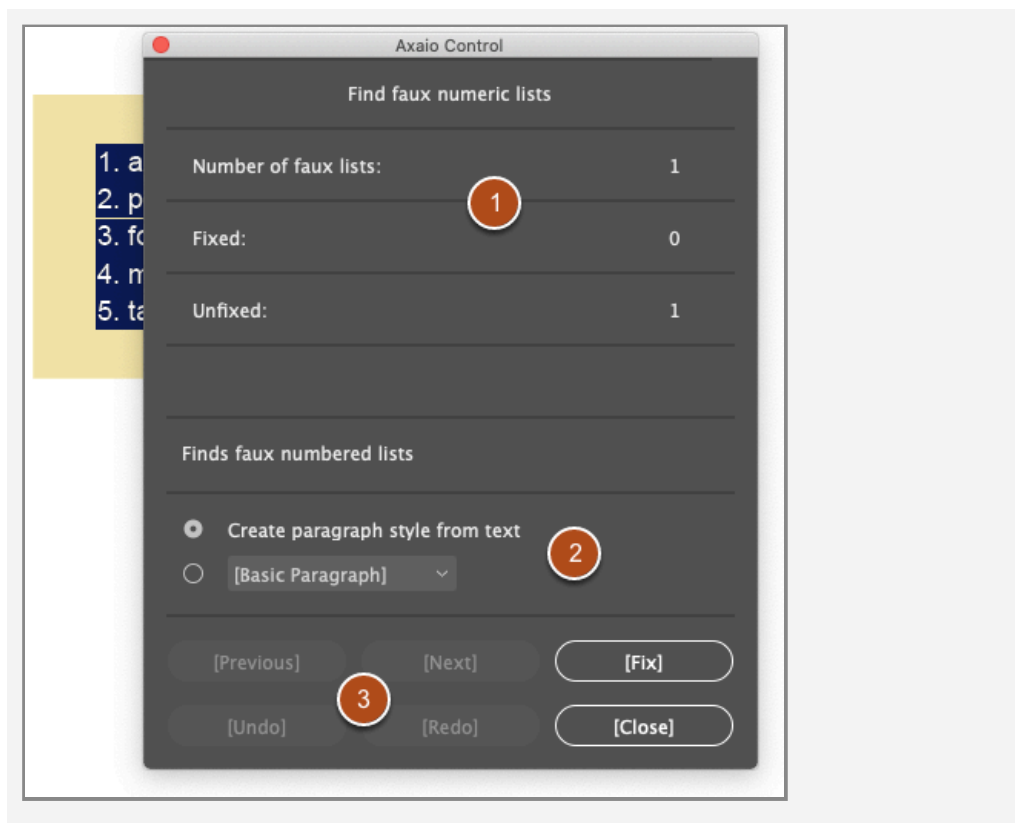
1. The window shows the *Number of faux lists* as well as the number of *Fixed* and *Unfixed* items.
2. For each item found, you can either *create a new paragraph style* or use a *paragraph style from the list* of styles already in use.
3. The interface at the bottom allows you to *navigate*, *Fix* items, *Undo* and *Redo* actions and *close* the window.

## Locate faux numbered lists



When this function is called, the *Find faux list* window will open.

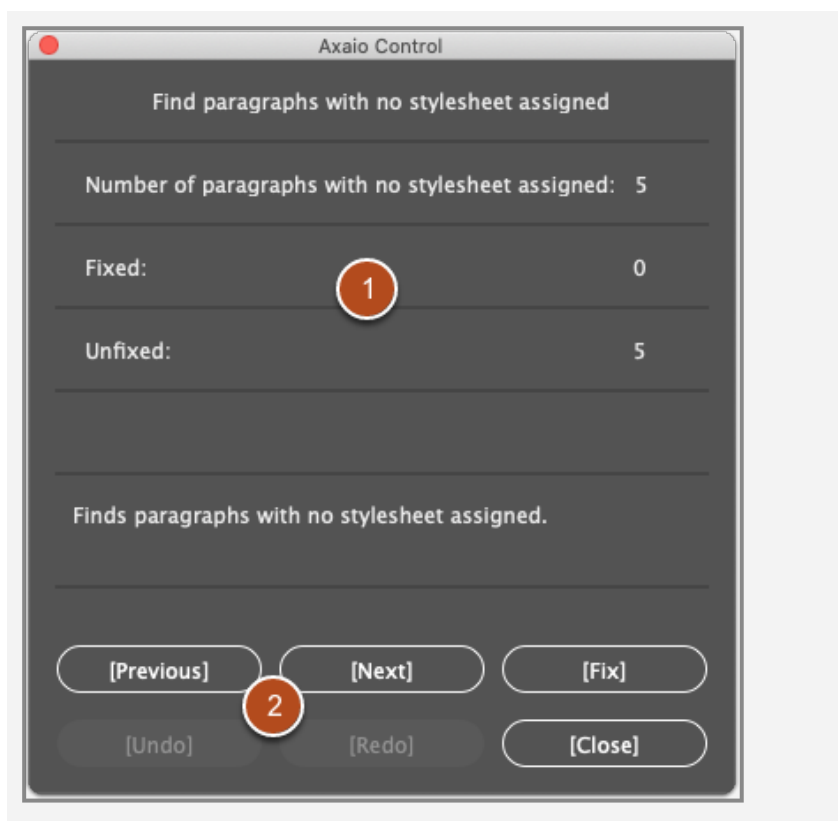
In the drop-down menu you can select which list type to search for.



Click **OK** to open the *Find faux numeric lists* menu.

1. The window shows the *Number of faux lists* as well as the number of *Fixed* and *Unfixed* items.
2. For each item found, you can either *create a new paragraph style* or use a *paragraph style from the list* of styles already in use.
3. The interface at the bottom allows you to *navigate*, *Fix* items, *Undo* and *Redo* actions and *close* the window.

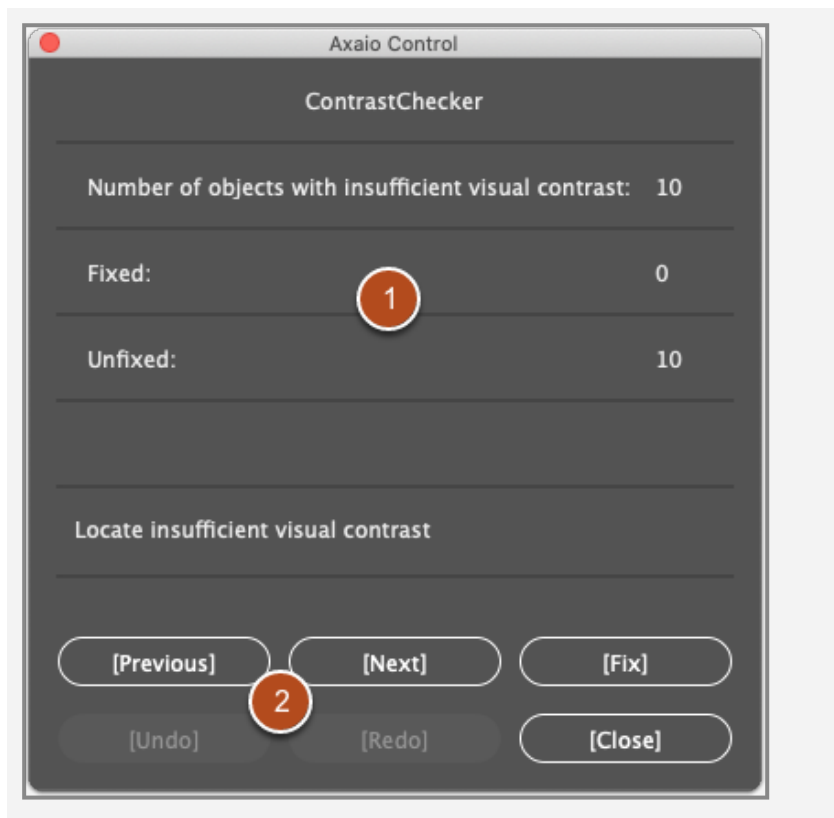
## Locate paragraphs without style



When this function is called, the MadeToTag Problem Locator window will open at *Find paragraphs with no stylesheet assigned*.

1. The window shows the *Number of paragraphs with no stylesheet assigned* as well as the number of *Fixed* and *Unfixed* items.
2. The interface at the bottom allows you to *navigate*, *Fix* items, *Undo* and *Redo* actions and *close* the window.

## Locate insufficient visual contrast

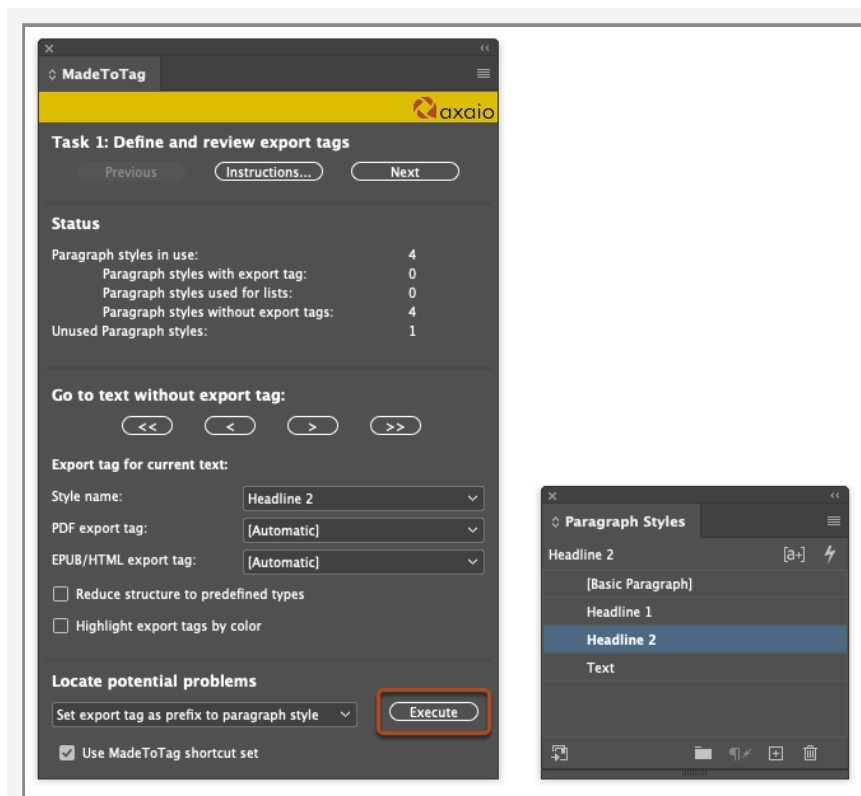


Insufficient contrast makes it harder for readers with visual impairments to identify content. An example of insufficient visual contrast would be light gray text on a white background.

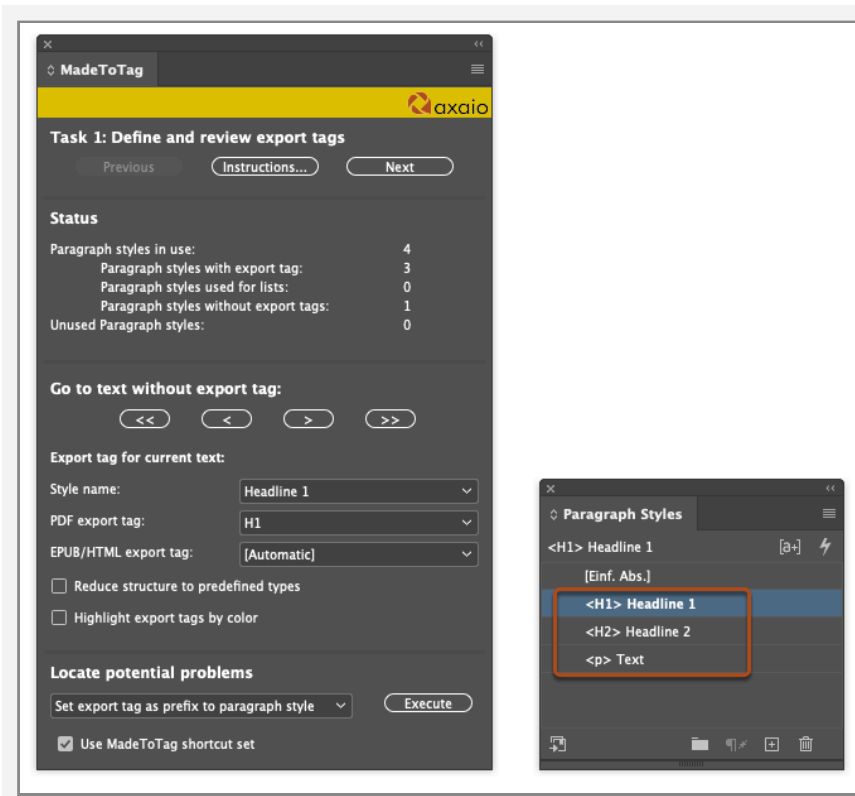
When this function is called, the **MadeToTag Problem Locator** window will open at *ContrastChecker*.

1. The window shows the *Number of objects with insufficient visual contrast* as well as the number of *Fixed* and *Unfixed* items.
2. The interface at the bottom allows you to *navigate*, *Fix* items, *Undo* and *Redo* actions and *close* the window.

## Set export tag as prefix to paragraph style

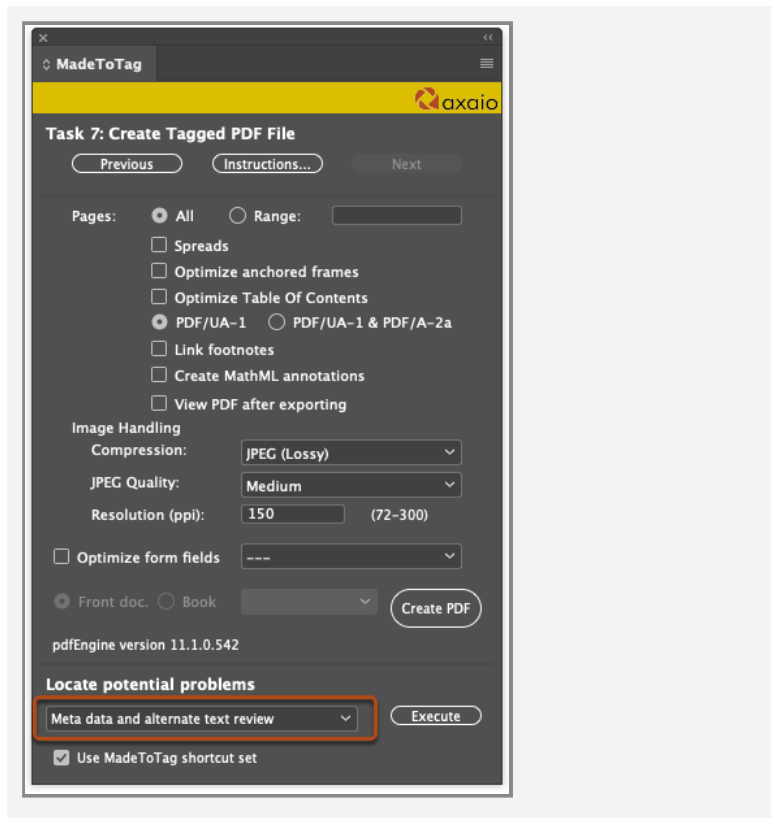


Select *Set export tag as prefix to paragraph style* and click *Execute...*



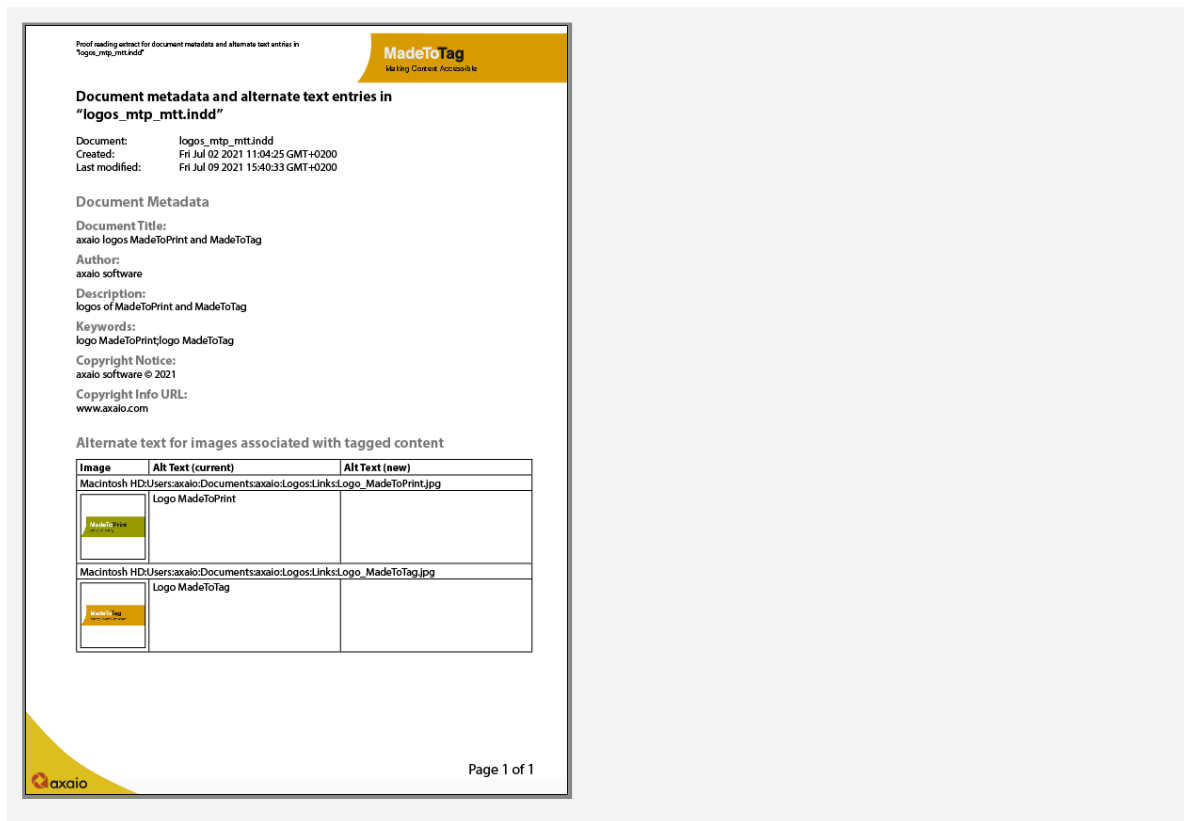
... to add export tags as a prefix which will be either assigned directly through the paragraph style or through MadeToTag.

## Meta data and alternate text review



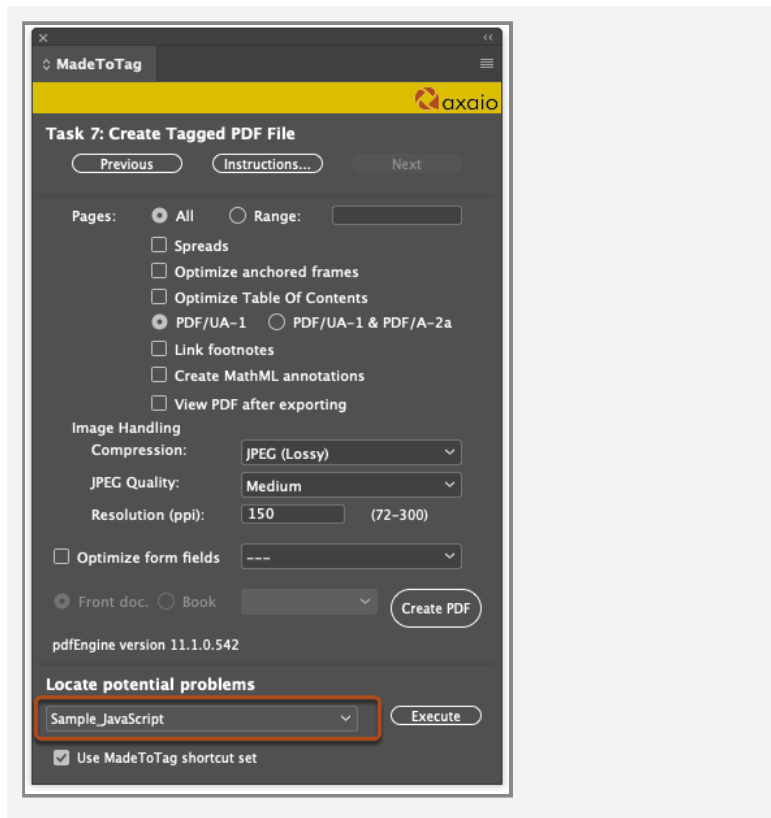
Select *Meta data and alternate text review* and click *Execute...*





... to see an **overview** of the **meta data** in the document and **alternate text** for images in a new InDesign document.

## JavaScript



The *JavaScript...* entry lets you execute an example script or integrate and execute a user-defined JavaScript for user-specific actions.