

Configuring the MadeToPrint Server

- i** To be able to use MadeToPrint with MadeToPrint Server, the Output Jobs must first be configured with the help of a Desktop version of InDesign and the corresponding MadeToPrint for InDesign – subsequently the setup Output Jobs can be exported and imported with the MadeToPrint Server.

Setup Output Jobs in MadeToPrint Desktop

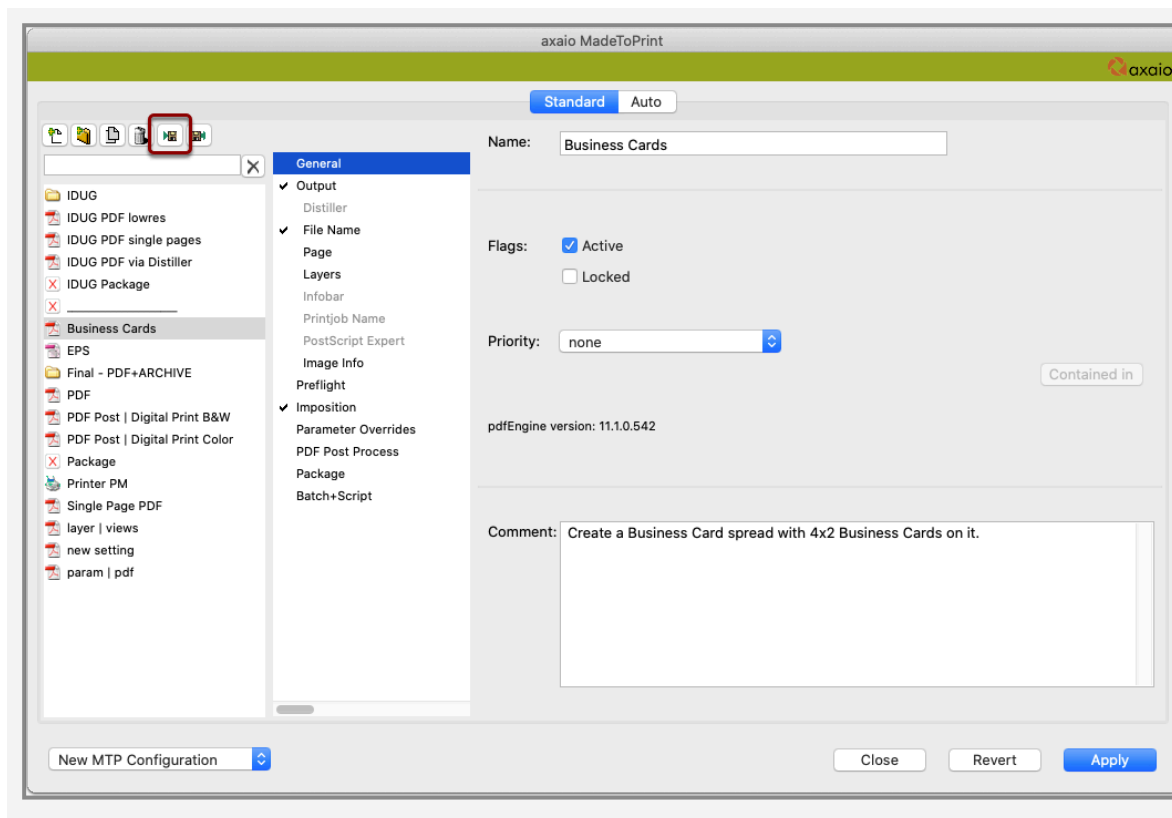
Install the MadeToPrint InDesign plug-in on any computer in your network where a Desktop version of Adobe InDesign is installed.

- Double-click MadeToPrint Plug-In Installer and follow the instructions.
- Documentation for the desktop version of MadeToPrint is automatically installed. It is located under user/Documents/axaio software documentation/MadeToPrint ID/English/MadeToPrint InDesign Manual.pdf (Mac) and under Program Files/Adobe/Adobe InDesign/Plug-Ins/axaio software/Documentation/ MadeToPrint InDesign Manual.pdf (Win).
- Configure the Output Jobs according to your requirements.

Using MadeToPrint Server UI to import Output Jobs

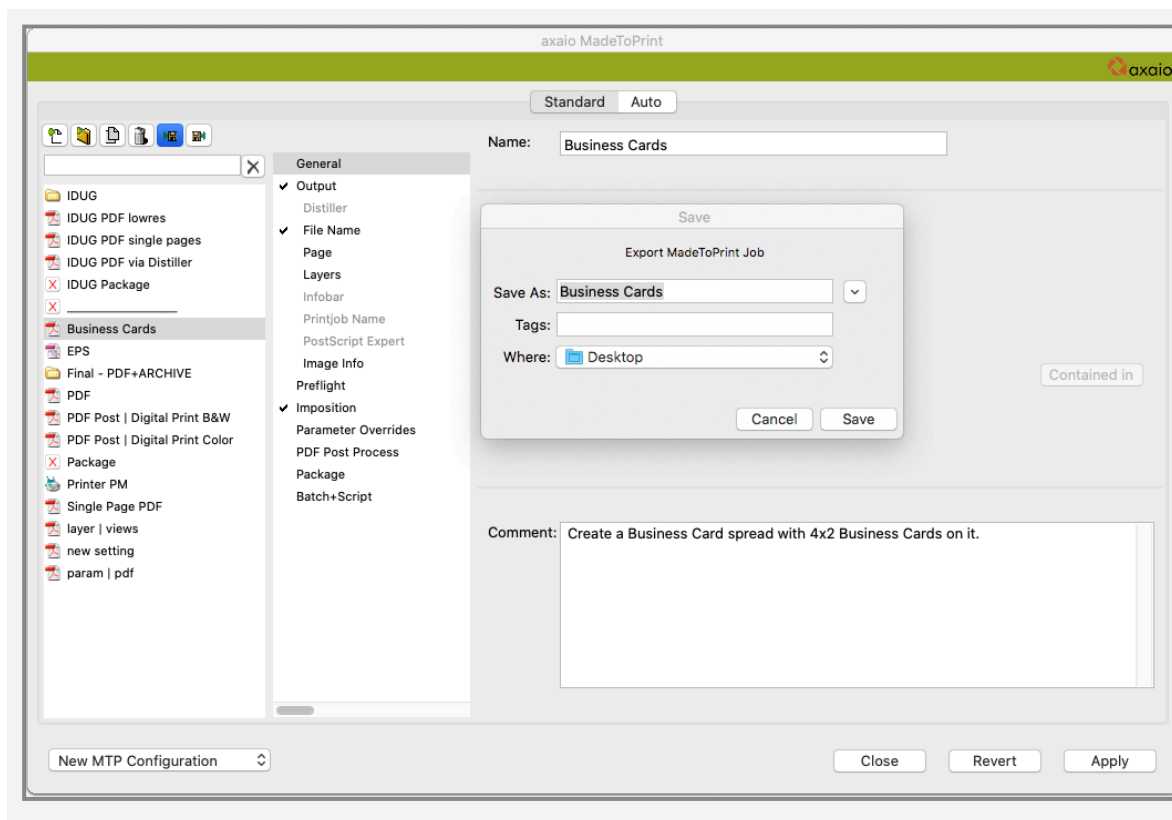
If not done yet, you need to set up *Connections* to inform the MadeToPrintServerUI where to find the MadeToPrint Server(s). See [Starting and activating MadeToPrint Server](#)

Exporting Output Jobs in MadeToPrint (Desktop)



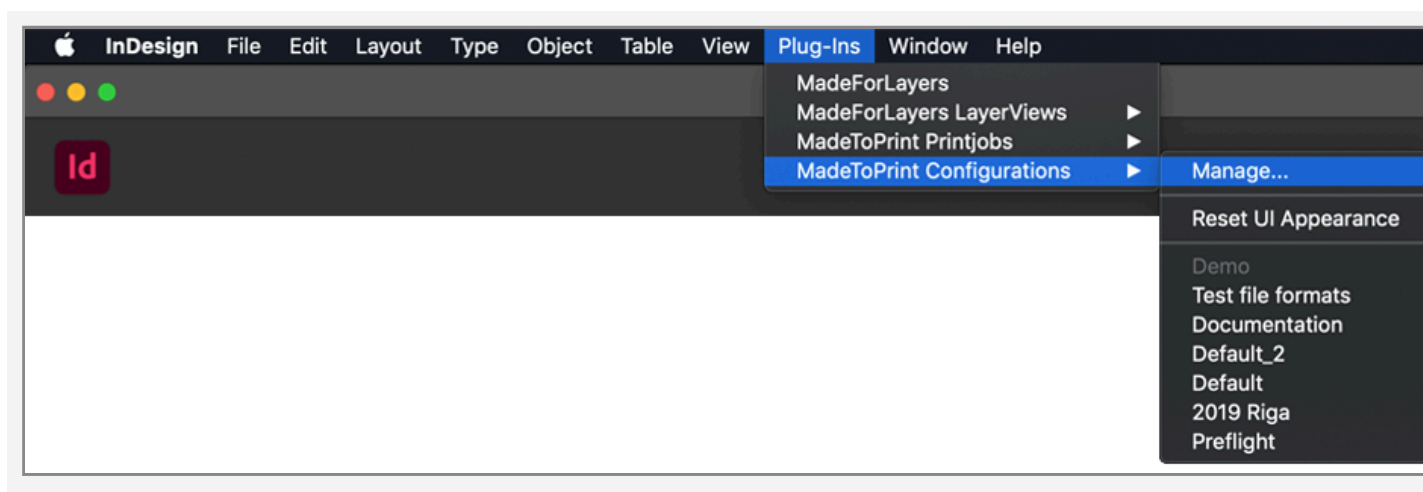
Exporting Output Jobs with the Standard version of MadeToPrint InDesign

- Clicking the Export icon opens a selection dialog for saving the corresponding Output Job or Job Set:

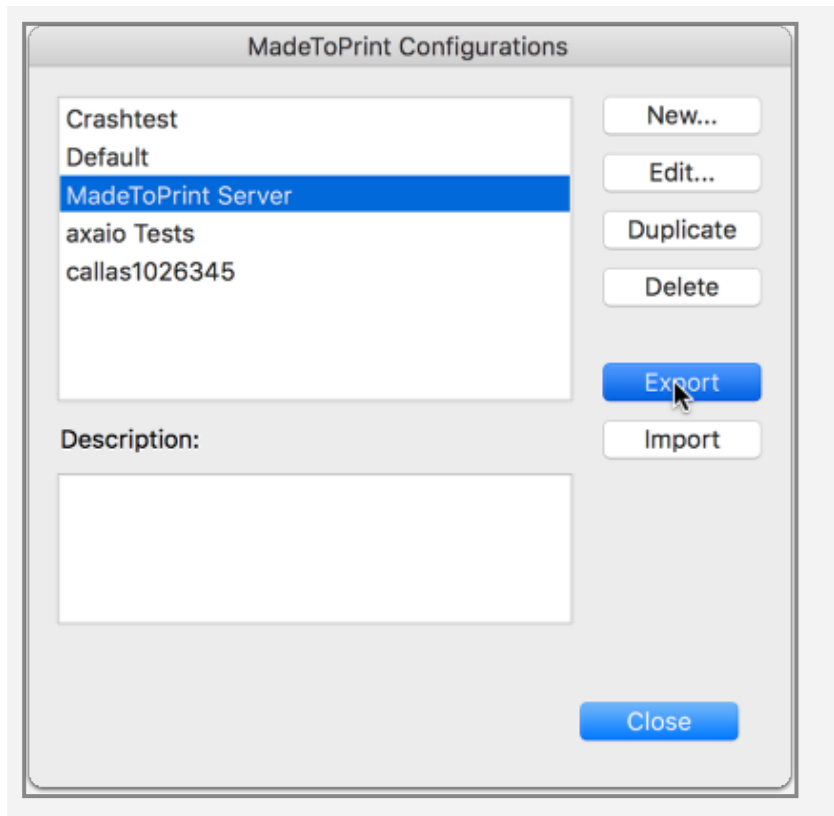


Selecting the location for storing exchange files

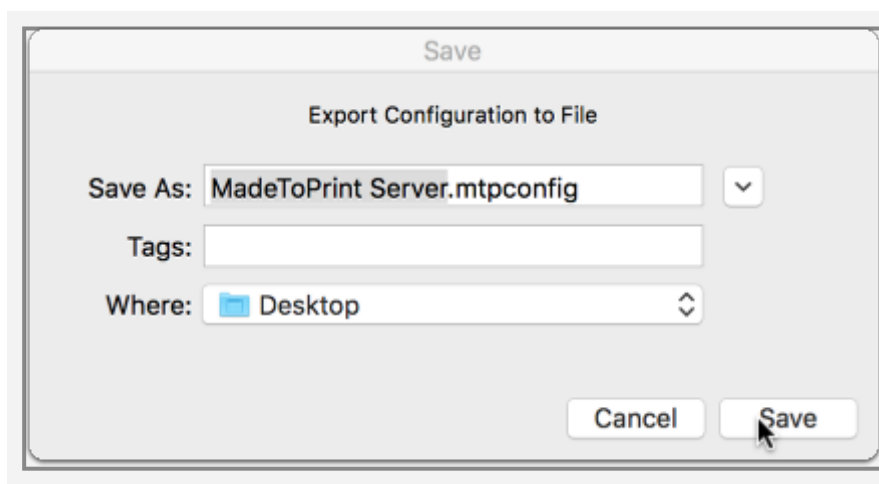
You can also export a complete Configuration, including Output Jobs, Auto Jobs and all assigned assets like scripts, pre-sets and PostProcess profiles.



From the InDesign menu, *Plug-Ins* choose *MadeToPrint Configurations; Manage...* to open the configurations manager.




Choose the desired configuration and click *Export*.



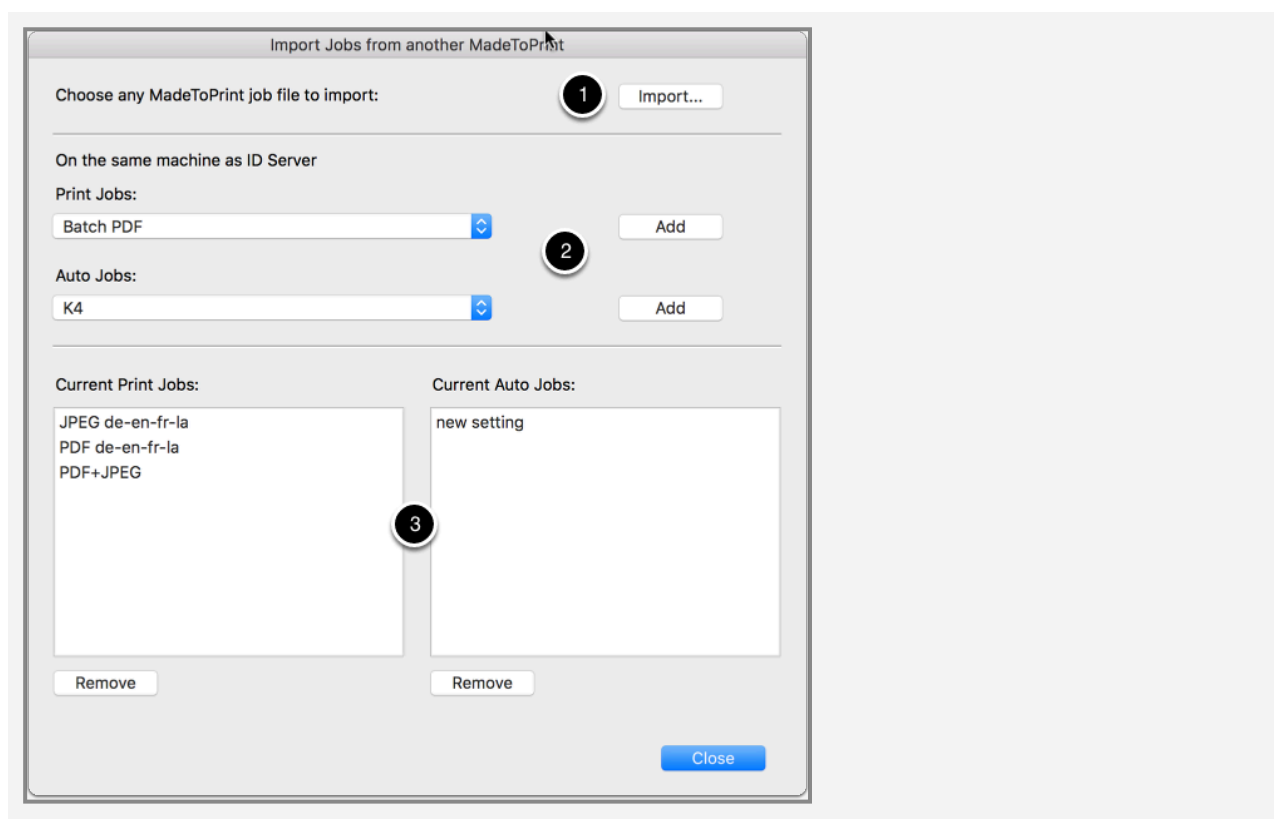
Choose any folder and hit *Save*.

Import into Server

 Even if you have set up multiple connections, the server UI is only connected to one (selected in the main windows) and will only import Jobs to that selected server.

Importing single Output Jobs and single Auto Jobs

To import single Output Jobs or Auto Jobs, click onto the Import button (4, see above) in the MadeToPrint Server UI.



This MadeToPrint UI is divided into three sections.

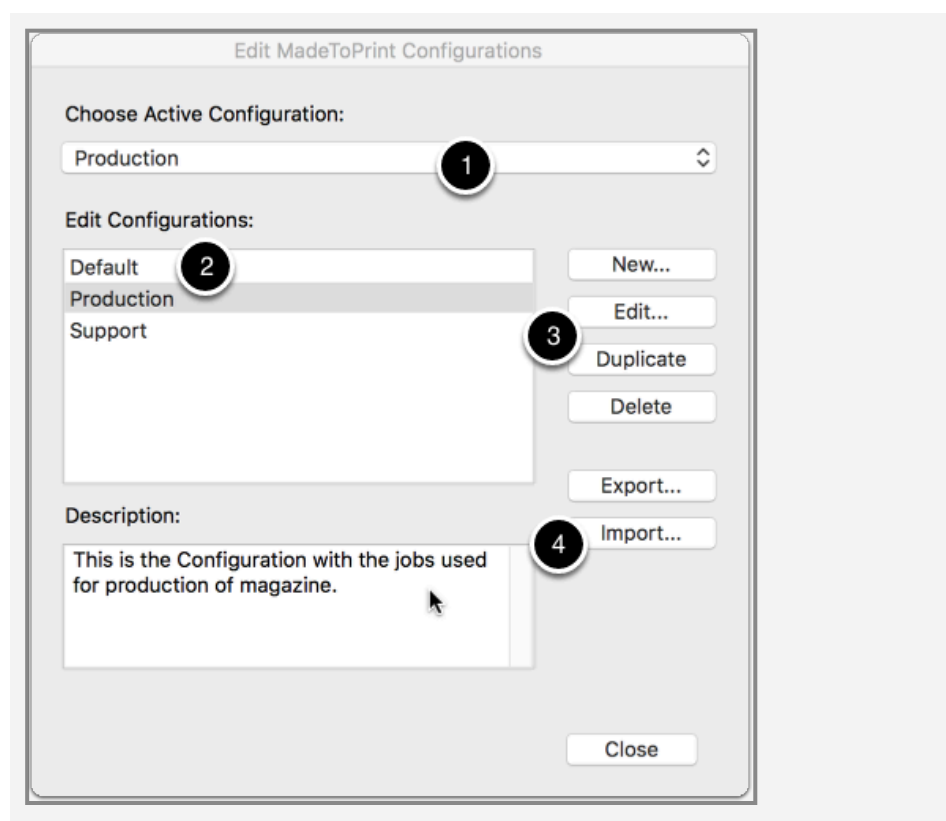
(1) In the top part of the window, you have a button to Import Output Jobs and Auto Jobs which you have been exported from a Desktop MadeToPrint.

(2) The center area displays Output Jobs and Auto Jobs which are available from a desktop MadeToPrint, which is installed on the same machine as the MadeToPrint Server plugin. To add any of those Output Jobs to the MadeToPrint Server plugin, select the one from dropdown and click *Add*.

(3) The lower area does list the actual Output Jobs and Auto Jobs which are installed in the MadeToPrint Server you are currently connected to.

Importing complete Configurations

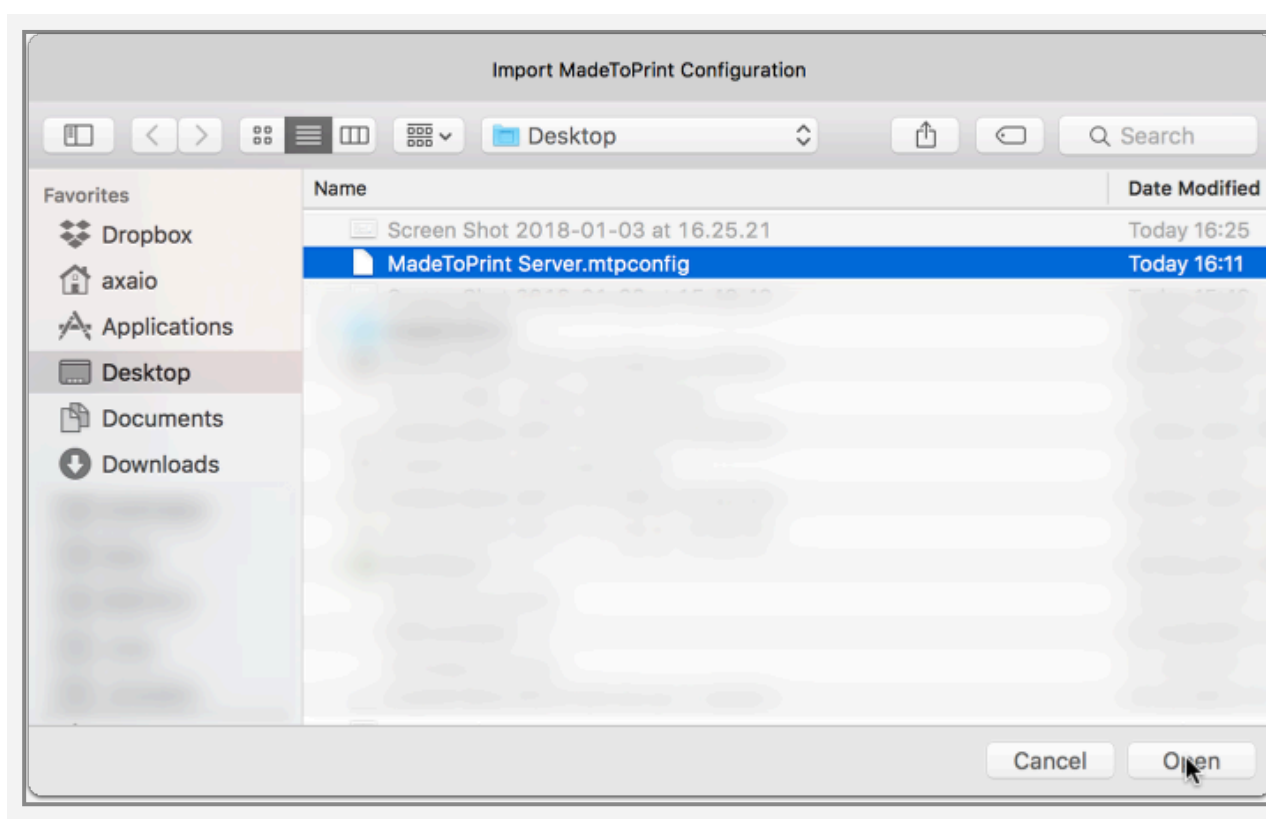
You can also choose to import complete Configurations. Therefore, in the main MadeToPrint Server UI, click the "Configuration" button.



(1) The dropdown will show available configurations in the MadeToPrint Server UI. You can also choose to change the active configuration in the MadeToPrint Server plugin.

(2) A list of configurations which you can edit, delete, duplicate. Select a configuration and choose from the action buttons (3)

(4) To import a new configuration, click *Import...* and choose a **.mtpconfig** file from your hard disk, which you have exported before from within the Desktop MadeToPrint.



Click *Open* to send the configuration to the server and activate it.

Important note for export/import of Output Jobs addressing a PostScript printer:



In case a PostScript printer is being addressed within a Output Job, MadeToPrint Server users

have to make sure that the printer determined within the imported Output Job is installed and properly configured on the computer with the MadeToPrint Server on it.



Explanation of terms: Output Job and Auto Job in MadeToPrint

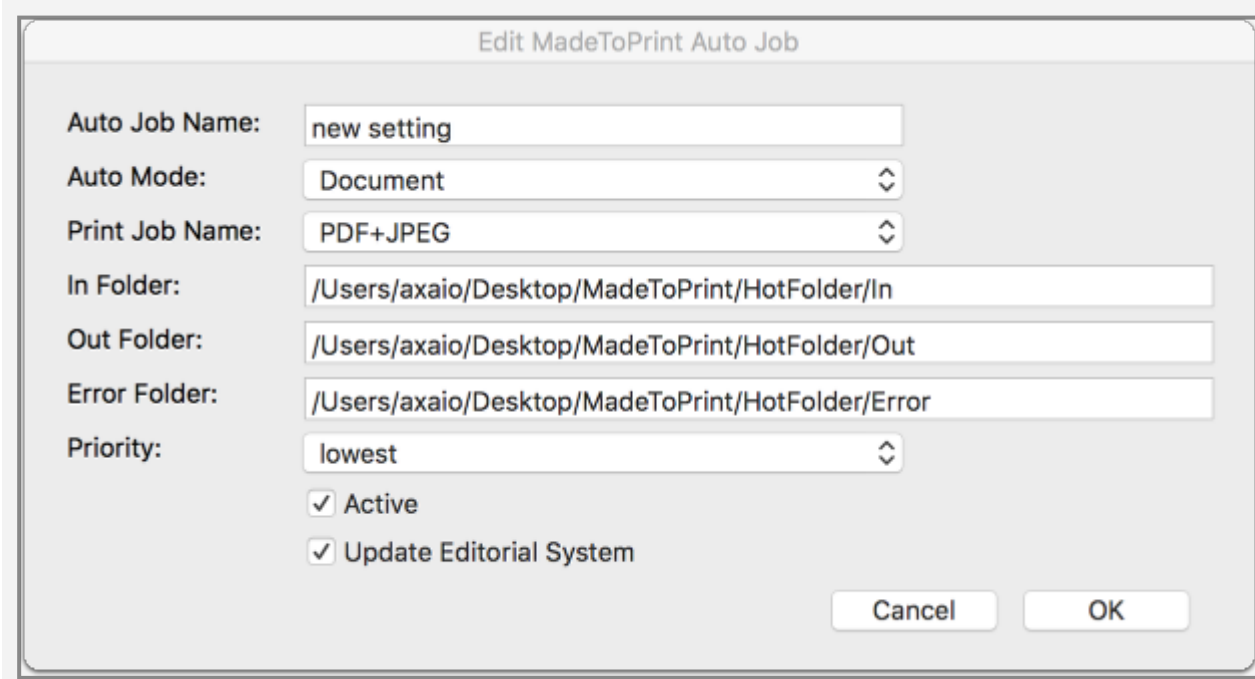
In the Output Job all settings relevant for the output are stored. It is specified whether the output job is to apply to PostScript output on a printer or to file output. The following formats are available for file output: PostScript, EPS, PDF, PDF interactive, JPEG, PNG, TIFF, IDML, EPUB and InDesign.

Auto Job refers to the output queues, which always consist of an IN, an OUT and an ERROR folder. They are used to feed InDesign documents to a specific Output Job and thus pass the original file through the MadeToPrint production.

Setting up MadeToPrint Auto Jobs

Auto Jobs can also be edited in the MadeToPrint Server. To do this, select any job and click *Edit...*, or create a new one by clicking *Add...*

Through a dialog box, you can define various settings, e.g. which Output Job to run in an Auto Job:



The screenshot shows a dialog box titled "Edit MadeToPrint Auto Job". It contains several configuration fields:

- Auto Job Name:** A text field containing "new setting".
- Auto Mode:** A dropdown menu with "Document" selected.
- Print Job Name:** A dropdown menu with "PDF+JPEG" selected.
- In Folder:** A text field containing "/Users/axaio/Desktop/MadeToPrint/HotFolder/In".
- Out Folder:** A text field containing "/Users/axaio/Desktop/MadeToPrint/HotFolder/Out".
- Error Folder:** A text field containing "/Users/axaio/Desktop/MadeToPrint/HotFolder/Error".
- Priority:** A dropdown menu with "lowest" selected.
- Active:** A checked checkbox.
- Update Editorial System:** A checked checkbox.

At the bottom right of the dialog are two buttons: "Cancel" and "OK".

Assigning Output Jobs to Auto Jobs in MadeToPrint Server