

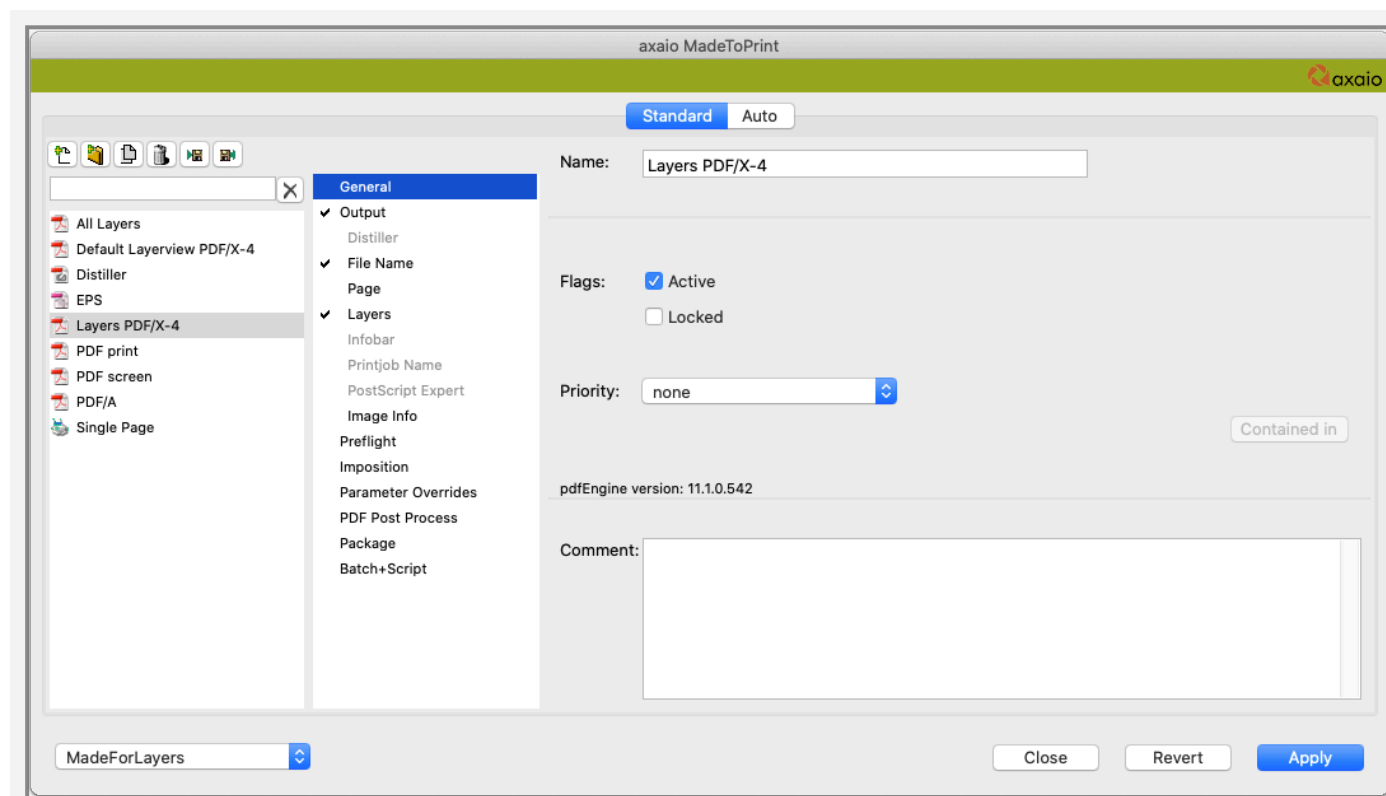
# MadeForLayers integration into MadeToPrint

## Integration in MadeToPrint

MadeToPrint has the capability to use layer views from MadeForLayers for printing and the export to various file formats (including PDF, EPS, various image file formats).

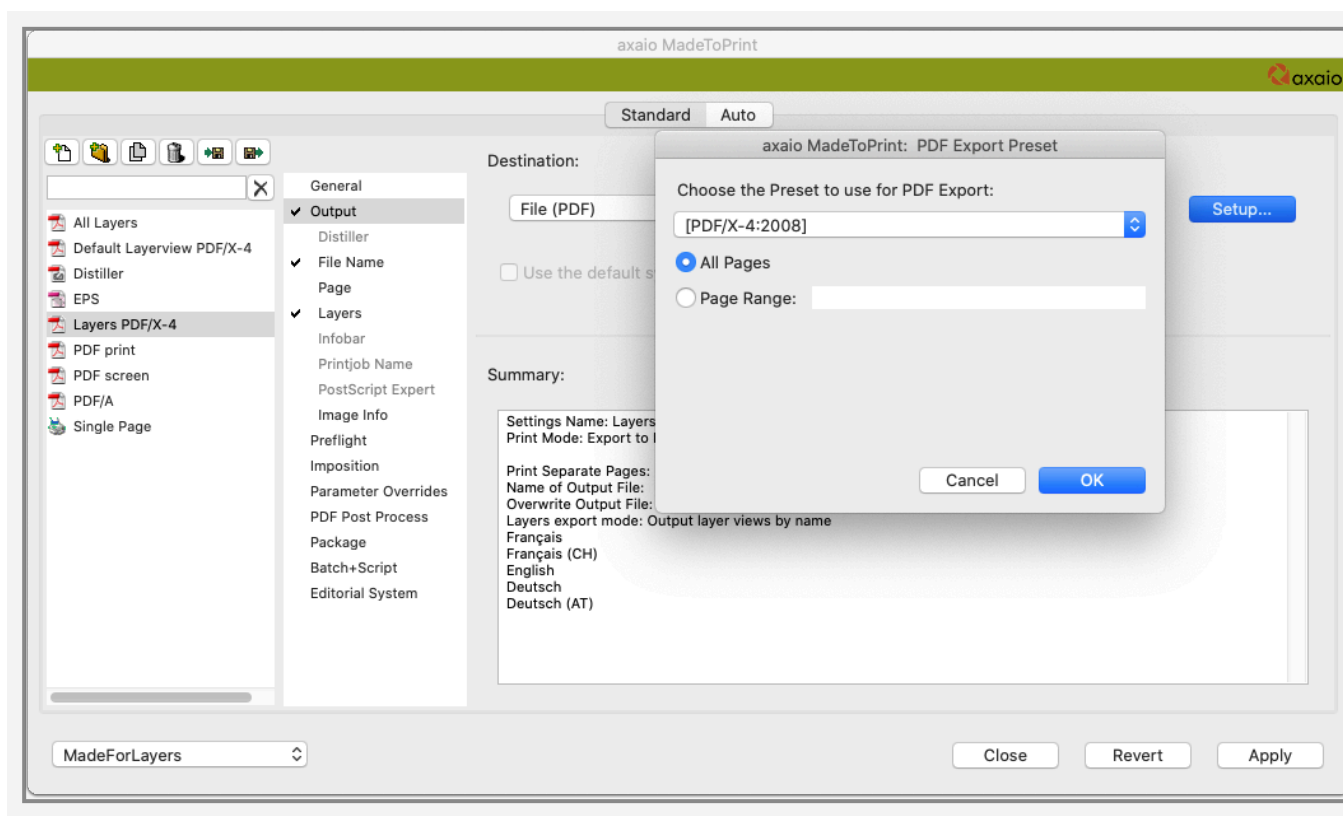
## Example: Exporting all layer views into a single PDF/X-4 file

In this example a MadeToPrint Output Job is created, and the layer views are exported to a PDF/X-4 file.

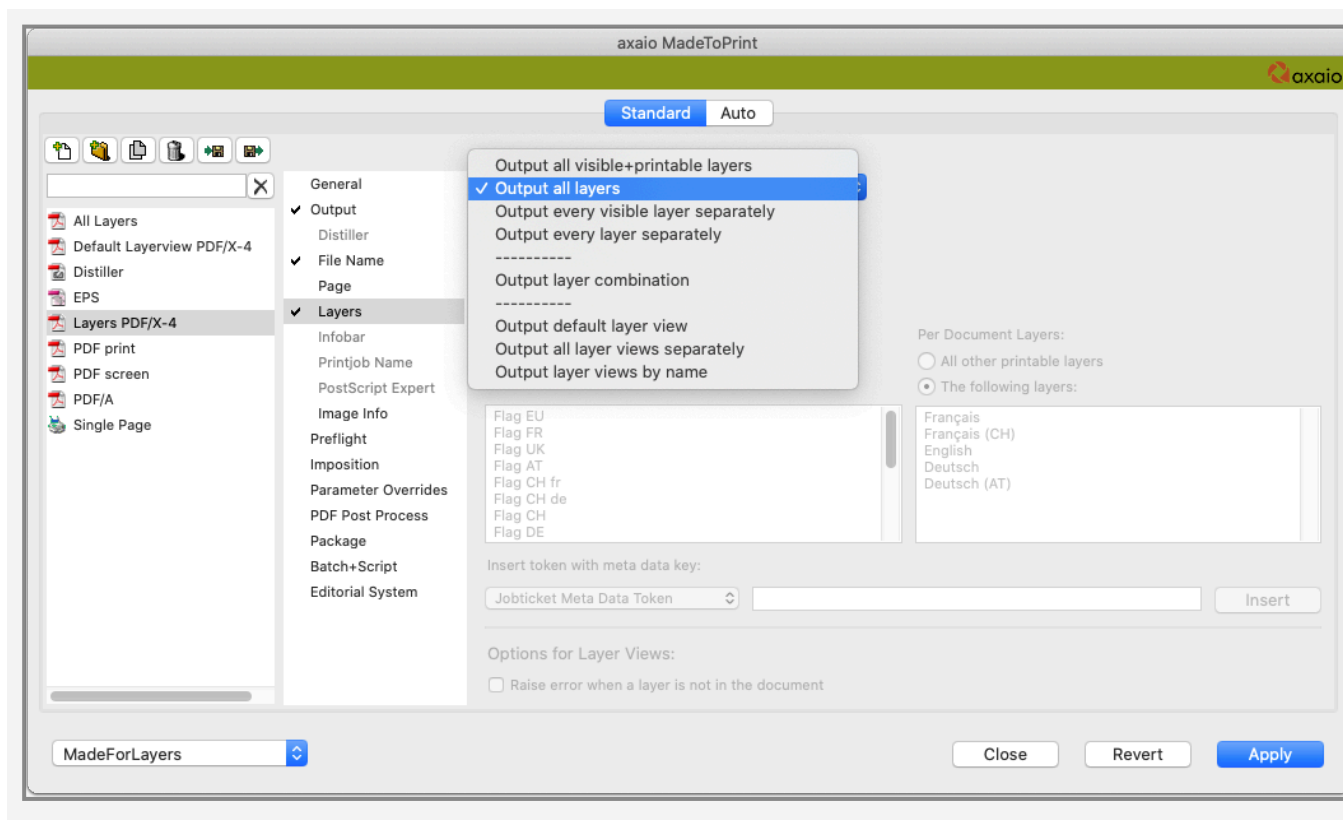


Under *Output* you can select the destination *file (PDF)*. The PDF default settings are opened by clicking the *Setup...* but-

ton. In this example, the default PDF/X-4:2008 is used since it supports PDF/X as well as layers.



Under *Layers* you will find three options that allow you to open the layer views from MadeForLayers. The three modes are listed at the bottom: *Output default layer view*, *Output all layer views separately* and *Output layer views by name*.

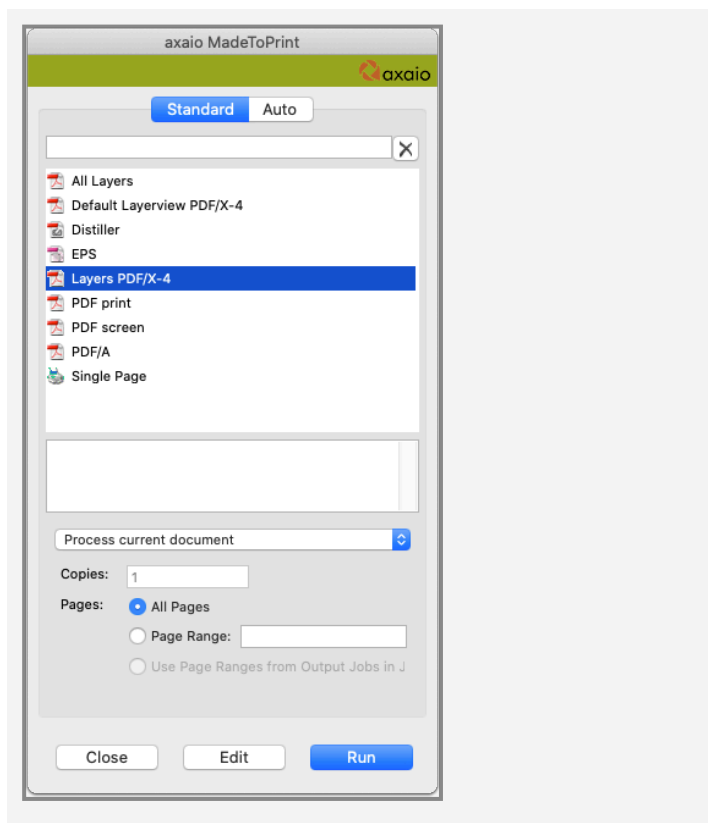


**Output default layer view** - Selecting the first option applies the default view (which you may have defined yourself) to the PDF file.

**Output all layer views separately** - The second option causes all layer views that were created in the original document to be included in the export. Finally, the selection is saved.

**Output layer views by name** - The third setting requires a selection of layer views by name.

In Run Mode of MadeToPrint, you can then select the new Output Job and run it by clicking the *Run* button..



When running this Output Job, you will get – depending on how many layer views have been set up in the InDesign document – multiple PDF files.